

SPX312

max 1200 kg

max 2790 x 770 x 1600 mm

max 10.5 m

max 9.5 m

The proper mini crane:
compact, easily maneuverable and versatile.
The perfect solution for any indoor job or to work in skyscrapers all over the world.



Technical Information

Dimension	LxWxH	2790 x 770 x 1600 mm
Stab Area		3700 x 3700 mm

		Kg	
Crane & Options Weights	SPX312CP	1800	
	SPX312C+	1850	
	/		
	2T-D7	20	
	PP400-4DX PP220-4DX PP220-2DX	45	
	JIB800GX JIB400.1MX	20 70	
MV600.3E+	180		

SPX312CP	Petrol Engine	YAMAHA MZ 360	7.6 kW 10.4 Hp
SPX312C+	Standard or Lithium Battery	N.4 BATTERIES 6V, 240Ah	4.0 kW 5.5 Hp

Speed		1.7 km/h
Gradability		20°
Ext. Tracks		770-1060 mm



Electric Power Pack

4 kW - 3F 400 VAC 50 Hz
AUX EU: 2 kW - 1F 220 VAC 50 Hz USA/CANADA: 4 kW - 1F 110 VAC 60 Hz

Max. Track Load

0.44 kg/cm ²

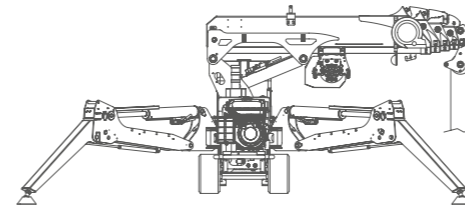
Max. Outrigger Load

MAX 1850 kg

Winch & Fall Stages

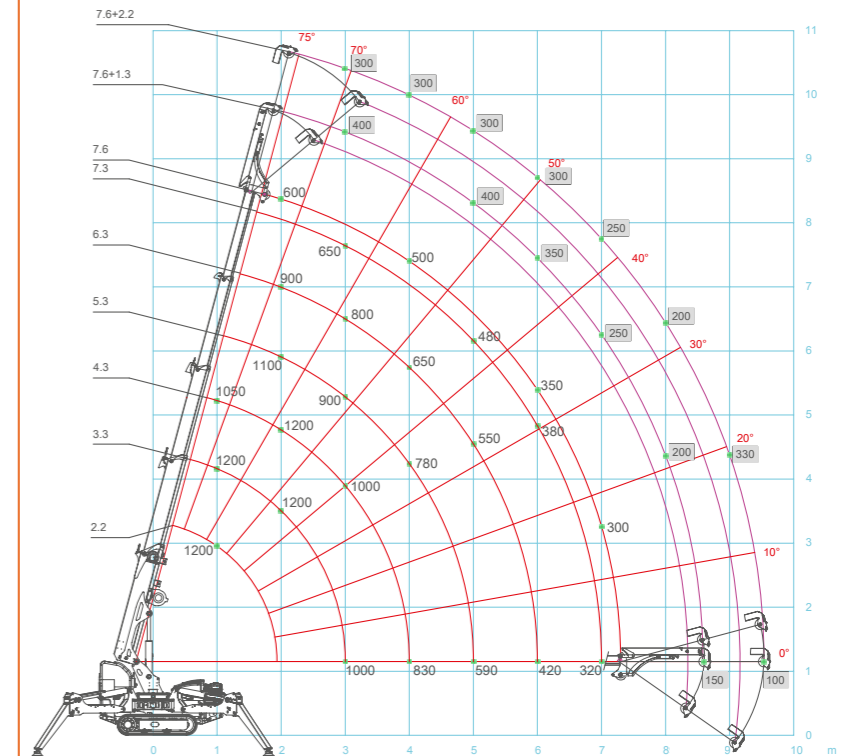
Main Winch

600 kg (Single line) 63 m - Ø 7 mm 15.1-31.8 m/min.

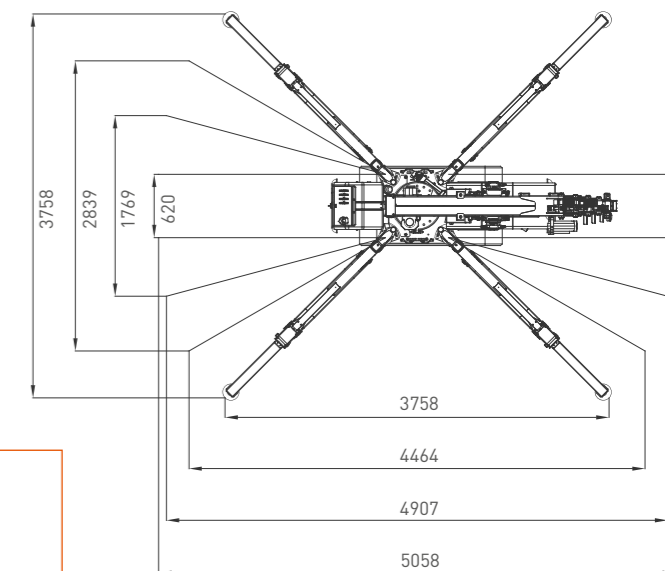
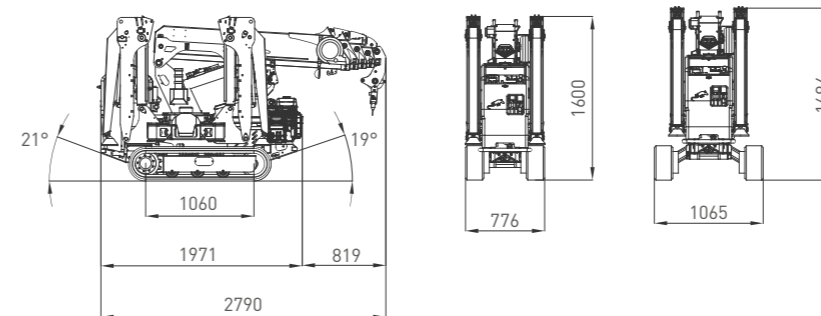


Max. Capacity	Line	Metres
max 1200 kg	2	-29 m
max 600 kg	1	-59 m

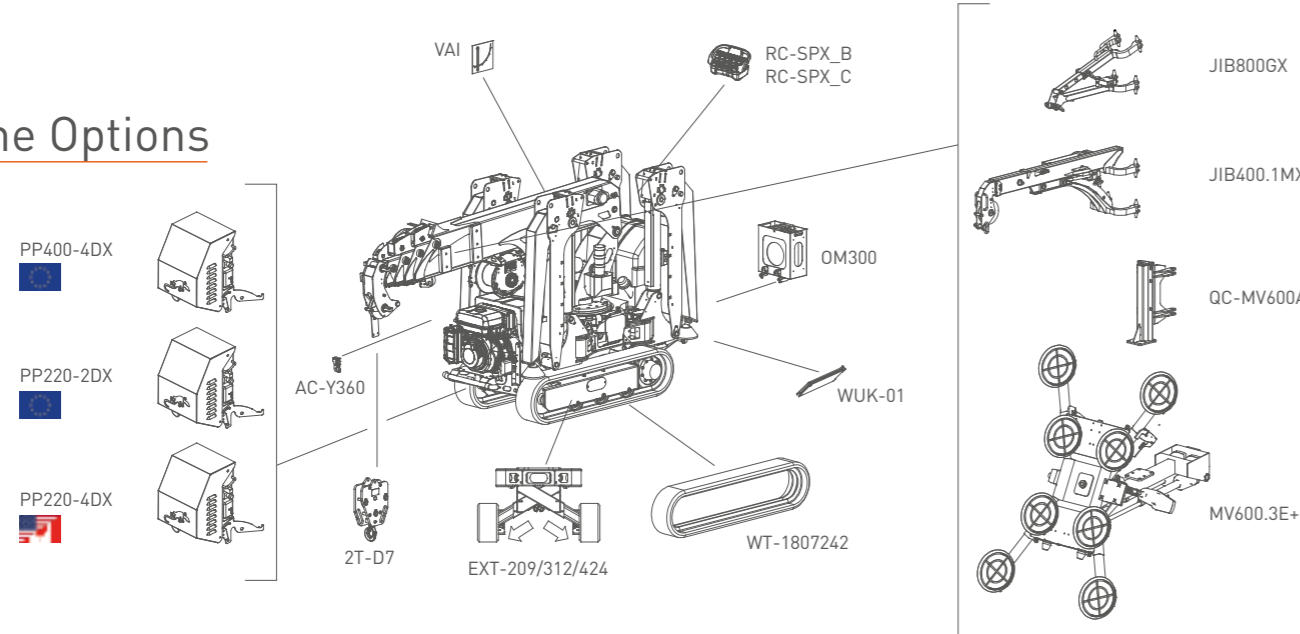
Load Chart



Dimensions



Crane Options



- A2B
- BPI
- CCI
- DTC
- EKT
- GSC
- LMI
- P&C
- PPA
- SCI
- TH
- VW
- RCD
- 2SW
- 2ST

Tools Configurations

	JIB800GX	JIB400.1M	MV600.3E+
max	800 kg	400 kg	600 kg
max	600 kg @ 9 m	300 kg @ 10.5 m	520 kg @ 9 m
max	200 kg @ 8 m	100 kg @ 9.5 m	100 kg @ 8.5 m

SPX312S (SHORT BOOM)

LxWxH	2490 x 770 x 1600 mm
	1.9 - 6.1 m